

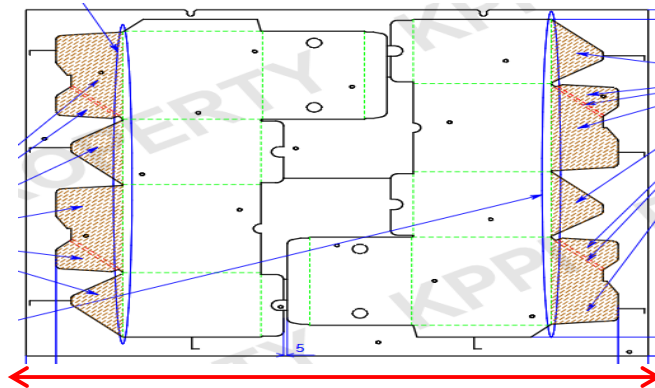
## Investigation Report for Misalign Diecut of Superflex PKC404B-B Motor Inner Box

CONTROL No:	IRF - 0004			REJECT PERCENTAGE:	0.91%
REJECT QTY:	82	LOT QTY:	9000		

DIRECT CAUSE	W1	The factor we consider cannot fit lock is due to abnormal lateral movement of Eterna die-chase.
	W2	The die-chase moved up to 7mm in the lateral direction (Left & Right) during mass production even though it was locked.
	W3	Due to the die-chase movement the creasing blade didn't hit the center of creasing matrix that may caused bursting.



Evidence of diecut movement in steel plate



The movement of the die-chase corresponds to the caused of reject items

### PRODUCTION ACTION PLAN

CORRECTIVE ACTION	Replacement of 6pcs die-chase spring.	PIC:	Engineering & Caledonian	TARGET DATE:	240630
CORRECTIVE ACTION	Include the die-chase spring in Engineering Machine History Sheet of Eterna. This is the basis of Engineering for the monitoring of machine parts life span for those parts that only Caledonian can maintenance or check.	PIC:	Engineering	TARGET DATE:	240630

PREPARED BY:

GERALD DE GUZMAN  
PROD SUPERVISOR

APPROVED BY:

WEENA V. APALLA  
ASST. MANAGER